



**EGO-FREE ARCHITECTURE**

GROUND UP + TENANT INTERIORS

[methodarchitecture.com](http://methodarchitecture.com)



# EGO-FREE DESIGN.

Method Architecture is a uniquely ego-free architecture firm, committed to a systematic creative process that focuses on clients and their needs first and foremost. Operating with the flexibility of a small firm, but with a big reach, Method is a full-service architecture firm specializing in tenant finish and ground-up projects encompassing industrial, retail, office, breweries, public and more.

OUR **MISSION:** To provide creative, high-quality, and innovative design solutions through an ego-free experience that focuses on our clients and their needs first and foremost.



**EGO-FREE CULTURE**

We collaborate with clients to understand their needs and goals which serve as our priorities throughout the entire project making the design process enjoyable.



**RESPONSIVENESS**

Proactive project management and constant communication to ensure project schedule and budget are met with quick turnaround.



**INNOVATION**

Through utilizing the latest technology and design trends, we are able to create efficiencies for our clients resulting in a unique design solution.



**KNOWLEDGE**

Our teams have worked on a wide range of project types from tilt-wall distribution centers to breweries. This diverse knowledge base allows us to incorporate aspects from other project types to create truly, unique designs.



MEET #TEAMMETHOD

**EGO-FREE MYTHBUSTER**



**Not all architects and designers wear horn-rimmed glasses**  
Nor do these make us better at our job.



MAERSK TRAINING CENTER  
HOUSTON, TX





## KARBACH BREWING CO.

### BREWERY | RESTAURANT

Karbach Brewing is a two-story, 22,040 SF brewery and tap house completed in 2015. With a full kitchen, two event spaces, a restaurant and bar with indoor and outdoor seating, this versatile and functional space features a state-of-the-art brewhouse and fermentation system, as well as a restaurant and tap room that are making a reputation in their own right.

### PROJECT TEAM

Karbach Brewing Co.  
Camden Construction



# BREWERY + DISTILLERY



**22,040 SF**  
SIZE



**120 BBLs**  
PRODUCTION CAPACITY



**2015**  
COMPLETED





## BUFFALO BAYOU BREWING

### BREWERY | RESTAURANT

The 28,258 square-foot, 3-story brewery and restaurant will feature a taproom, restaurant, patio, private event space and party deck. The brewery will be located adjacent to The Silos at Sawyer Yards located in the Washington Avenue Arts District. Buff Brew is expected to be complete by the end of Summer 2019. On the first floor there will be a beer garden and views into the production area while the second floor will feature over 40 taps, restaurant space and a patio. There will be a full skyline view with a rooftop bar and event space on the third floor.

#### PROJECT TEAM

Buffalo Bayou Brewing Co.  
DMAC Construction  
Pinnacle Engineering

DVO Engineering  
H2B Engineers  
Gin Design Group



**28,258 SF**  
SIZE



**30 BBLs**  
PRODUCTION CAPACITY



**2019**  
COMPLETED



## 8TH WONDER DISTILLERY

### DISTILLERY | ADAPTIVE REUSE

8th Wonder Distillery, located across the street from 8th Wonder Brewery, takes similar design cues from the original brewery to tie them together. Industrial design cues are incorporated throughout the space with exposed brick, wood, metal, and concrete. Barrels were used as tables, wooden chairs with grass texture, and subway tile along the back wall were chosen to create a cohesive look between the neighboring brewery and distillery.

#### PROJECT TEAM

8th Wonder Distillery



**2,462 SF**  
SIZE



**2019**  
COMPLETED





## BELTWAY SOUTHWEST



2019 HBJ LANDMARK AWARD  
FINALIST  
AWARD-WINNING

### LIGHT INDUSTRIAL | DISTRIBUTION

The development of Phase I, which consists of more than 351,000 square feet was completed in 2016 and includes a 240,000-square-foot cross dock building featuring 32' clear height and 52' by 47' column spacing as well as a 110,000-square-foot rear load building featuring 28' clear height and 52' by 45' column spacing. The building consists of rear-load overhead dock doors, two drive-up ramps in large truck court, a full ESFR sprinkler system throughout (with fire pump and break tank), aluminum curtain wall and storefront systems with integral sunshades and double-stacked aluminum canopies at entrances.

The buildings feature a sleek, distinctive design while also providing tenants with functional and efficient floor space, all within a controlled business park setting.

### PROJECT TEAM

Hines  
Arch-Con Construction

Kimley-Horn & Associates



**351,800 SF**  
SIZE



**28-32 FEET**  
CLEAR HEIGHT



**\$12M**  
CONSTRUCTION COSTS



# INDUSTRIAL





## MAMA LYCHA DISTRIBUTION CENTER



2017 TILT-UP ACHIEVEMENT AWARD  
AWARD-WINNING

### COLD STORAGE | FOOD PROCESSING | BUILD-TO-SUIT

Mama Lycha's new corporate headquarters is a industrial tilt-wall building designed with private offices and collaborative work spaces, a training kitchen, extensive cooler and freezer storage, several food processing rooms and a large warehouse area for racking incoming and outgoing products. This project was also a Finalist for the 2017 Houston Business Journal Landmark Awards.

#### PROJECT TEAM

Mama Lycha Foods  
Keen Realty Developers  
A&F General Contractors  
Dally & Associates  
Tac Engineering



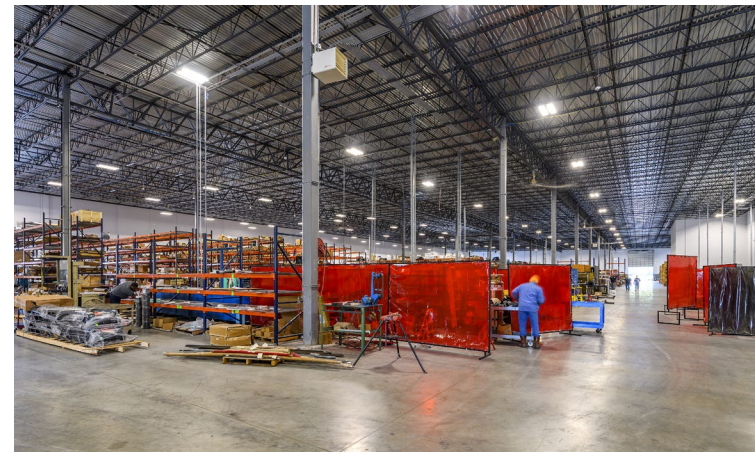
65,328 SF  
SIZE



HOUSTON, TX  
LOCATION



\$4M  
CONSTRUCTION COSTS



## GHX INDUSTRIAL



2018 TCA TILT-UP ACHIEVEMENT  
DESIGN AWARD  
AWARD-WINNING

### BUILD-TO-SUIT

Completed in 2017, the GHX Industrial building at Lockwood Business Park is home to GHX's new headquarters and Houston distribution center. Located in Generation Park, the building takes design queues from the look and feel of the master-planned park. Painted and textured concrete tilt wall panels make up all of the exterior finish and express materiality with pattern of reveals, both tight knit and sporadic depending on the function of the interior space. This along with staggering positions and varying height of panel allow for the building to maintain just the right proportions and balance for an expressive façade. In addition to the concrete tilt wall design, aluminum canopies and glazing areas emphasize components of the design, rather than the typical big box industrial method.

#### PROJECT TEAM

McCord Development  
Burton Construction

Miller Builders  
Dally + Associates



143,537 SF  
SIZE

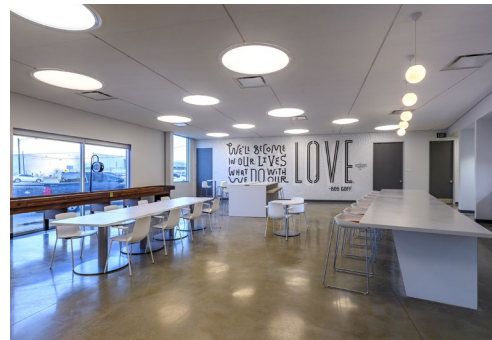


34 FEET  
CLEAR HEIGHT



\$7.4 M  
CONSTRUCTION COSTS





# BIG BROTHERS BIG SISTERS



**2018 HBJ LANDMARK  
AWARD FINALIST**  
AWARD-WINNING

## CORPORATE BUILD-TO-SUIT | COMMUNITY | NON-PROFIT

The headquarters of Big Brothers Big Sisters Houston is located just north of downtown. It has a dynamic seesaw roof and a lively variety of window openings provide different faces to the multiple sides of the city making the building more visible and reflecting the mission's core values of openness and vitality. With a program combining private and open office space with interview and meeting rooms, a children's playroom, café, and a multi-purpose event space connected to an open-air balcony with commanding views of downtown Houston and the Buffalo Bayou, the building uses standard building systems and cost effective materials to produce an inspiring work environment that is more than just an office. A three-story open atrium at the west entrance acts as a thickened public zone, within which a main staircase and balcony system connect the three floors physically and visually to enhance interaction, communication, and fluidity of movement. At night the illuminated headquarters, alongside the downtown skyline, becomes a community beacon within the city of Houston.

### PROJECT TEAM

Big Brothers Big Sisters  
Agency-Agency  
DMAC Construction  
Stantec

TBG Partners  
FMW Fab Lab  
Signpro Display & Graphics  
Steelcase

ROSI Office Systems  
Rice Design Alliance  
Rice University Arch. Program



**19,898 SF**  
SIZE

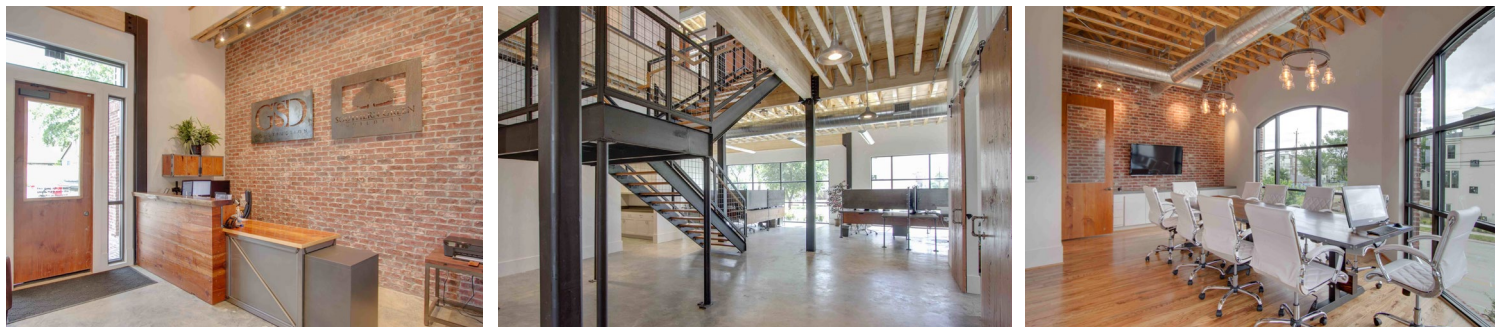


**2017**  
COMPLETED



**OFFICE**





## GSD CORPORATE OFFICE

### CORPORATE BUILD TO SUIT | OFFICE

The General Structural Development (GSD) Corporate Office is a two-story office building located adjacent to the historic Heights neighborhood. Exposing the wood-framed construction allowed for a more spacious interiors and provided an opportunity for industrial inspired accent lighting. The space is a blend of a traditional warehouse aesthetic mixed with the simplicity of modern interior design and furnishings. The exterior is a mix of brick and metal panels with large bronzed windows, which provide impressive views of the neighborhood, including the Houston downtown skyline.

#### PROJECT TEAM

General Structural Development  
Duplantis Design Group  
Bec-Lin Engineering

CJE Engineering, LLC  
Dawson Van Orden



**6,124 SF**  
SIZE



**2013**  
COMPLETED



## MAERSK TRAINING CENTER



HBJ INDUSTRIAL LANDMARK  
AWARD FINALIST  
AWARD-WINNING

### CORPORATE INTERIORS

Near Bush Intercontinental Airport, the recently completed Maersk Training facility houses multiple classroom areas and seven immersive virtual reality simulators to train clients in meticulous detail. Additional features include open gathering and lounge spaces, welcoming entries and shower facilities. The spaces utilizes natural materials, ultra modern lines and open work spaces to draw a connection between their first US location and Maersk's home office in Denmark.

#### PROJECT TEAM

Maersk Training  
Burton Construction



**44,732 SF**  
SIZE



**2015**  
COMPLETED





# BROKEN BARREL

## RESTAURANT | BAR

Broken Barrel is a wine bar and restaurant in the Hughes Landing Development located in The Woodlands. The design mixed a variety of materials including concrete, wood, and brick to create an industrial but inviting atmosphere. An indoor-outdoor feel was emphasized with large wrap around windows looking out to the patio and showcasing the water front. Blue and yellow pops of color play off the natural elements to help warm the restaurant up, creating a relaxing and fun environment.

### PROJECT TEAM

Broken Barrel  
Iron Horse Builders  
Dawson Van Orden



4,783 SF  
SIZE



2017  
COMPLETED



RETAIL





## 8200 WASHINGTON

### ADAPTIVE REUSE | MIXED-USE

8200 Washington consists of the renovation of an existing two-story pre-engineered metal building to be used as a mixed use retail development. This project will have a 40,000-square-foot warehouse filled with vendors selling food, art, jewelry and more. Also, there are plans for a half-acre of green space and a 13,000-square-foot beer garden. Railway Heights Market is expected to open in 2019.

#### PROJECT TEAM

Easy Park  
DMAC Construction



**37,862 SF**  
SIZE



**2019**  
COMPLETED



## REVOLUTION STUDIO

### FITNESS STUDIO

Revolution Studio is a Houston-based cycling studio striving to revolutionize the way patrons workout, and more importantly, the way they feel about working out. The main studio utilizes over 40 stationary cycling bikes, a custom audio and lighting system, and elite instructors to guide their clients on a new workout experience. The design and feel of the space was intended to be simple, modern and bright keeping with the overall theme of transforming physically, mentally and spiritually.

#### PROJECT TEAM

Revolution Studio  
Apollo Construction



**2,414 SF**  
SIZE



**2013**  
COMPLETED





## EAST VILLAGE



ULI DEVELOPMENT OF  
DISTINCTION AWARD FINALIST  
AWARD-WINNING

### ADAPTIVE REUSE | MIXED-USE

This redevelopment project, located in the arts and entertainment district of East Downtown, contains retail, hospitality and office space. The development features a large, central courtyard space with various seating areas, a food truck yard and playful aspects such as a ferris wheel. Schematic design by Michael Hsu Architecture with Method Architecture providing the construction documents and serving as the architect of record.

#### PROJECT TEAM

Ancorian  
Course Construction  
Michael Hsu Office of Architecture  
H2B Engineers



30,000 SF  
SIZE



2018  
COMPLETED



## M-K-T HEIGHTS

### ADAPTIVE REUSE

Working with Michael Hsu Office of Architecture, this adaptive reuse project will transform former industrial buildings into a lively, mixed-use development containing 100,000 square feet of creative office space and 100,000 square feet of chef-driven restaurants, first-to-market retailers and studio fitness concepts.

#### PROJECT TEAM

Triten Real Estate  
Radom Capital  
Michael Hsu Office of Architecture

Pinnacle Structural Engineers  
Walter P Moore  
SWA



200,000+ SF  
SIZE



2020  
COMPLETED





## GRAND PARKWAY PEDIATRIC DENTAL

### DENTAL OFFICE

This pediatric dental facility is located in Richmond, Texas. The office includes office space, a waiting area with game rooms, individual treatment rooms, an open-area dental space, and a training room to provide continuing education to fellow dentists. The client wanted an immersive, underwater themed environment. Each design decision was carefully thought out to match the vision. From surfboard dental chairs to 3-D murals, each decision was made to provide a fun patient experience.

### PROJECT TEAM

T&D Engineers  
J.A. Greene Construction  
Patterson Dental  
Worlds of Wow



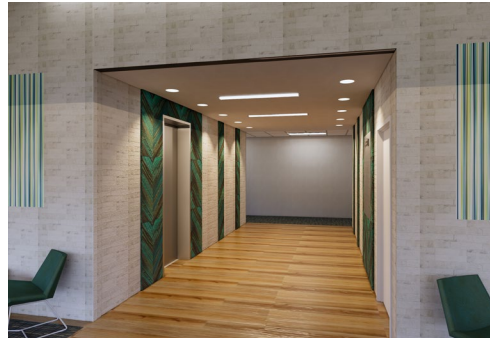
**5,552 SF**  
SIZE



**2019**  
COMPLETED

 **HEALTHCARE**





## METRIC MEDICAL OFFICE

### MEDICAL OFFICE SHELL

This project consists of a ground-up, 2 story, medical mix use office building. Clean and modern finishes were used throughout the exterior and lobby spaces from sleek wood planks and black stone to a glass skirt surround.

### PROJECT TEAM

Burton Construction  
Kimley-Horn  
Dally Associates  
Wylie Consulting Engineers



**23,040 SF**  
SIZE



**AUSTIN, TX**  
LOCATION



**2020**  
COMPLETED



## LEGACY AT CIMARRON

### SENIOR LIVING FACILITY | MULTI-FAMILY

This luxury, two-story, assisted living facility with memory care suite has 86 units consisting of 5 room types to accommodate the varying needs of residents. Each unit has a private restroom, mini kitchenette, and sleeping quarters. The building features a 2-story atrium with large clerestory windows with views of the Franklin mountains, ample covered patio space and amenities such as a salon and movie theatre.

### PROJECT TEAM

Pinpoint Senior Living  
Bradbury Stamm Construction



**68,000 SF**  
SIZE



**EL PASO, TX**  
LOCATION



**2017**  
COMPLETED





# EDUCATION



## JAMIE PADRON ELEMENTARY SCHOOL



LEED GOLD CERTIFICATION  
SUSTAINABILITY

PUBLIC | K-12 | ADAPTIVE REUSE

This adaptive reuse renovation converted an existing warehouse into a 57-classroom school. It is currently Austin's largest elementary school and has achieved the City of Austin 4-Star Green Building rating and LEED Gold Certification. In order to accommodate the need for more space, a second floor was added including an atrium with a sky-lit mall to bring daylight in the interior to enhance the learning environment. Classrooms, gym and cafeteria combination, library, specialized classrooms, and administration functions were rooms created in the interior. Bold primary colors were used throughout the design to create a playful atmosphere for the elementary. The exterior was completely revamped from the original warehouse look to create a lively, welcoming appearance including a playground, covered outdoor play area with a basketball court, canopies for wayfinding at the entrances, and parent and bus drop-off stations.

### PROJECT TEAM

Austin ISD  
Flintco LLC  
Coleman & Associates

MPE Engineering Inc.  
Doucet & Associates  
JQ Engineers

Combs Consulting Group  
BLW Security Group  
Hollon + Cannon



143,000 SF  
SIZE



AUSTIN, TX  
LOCATION



2014  
COMPLETED





## WINN ELEMENTARY SCHOOL

PUBLIC | K-12

This project consisted of a 5,130 SF stand-alone library addition and 7,280 SF interior renovation. The library addition is a steel frame on a suspended concrete slab and features an expansive reading room flooded with natural light. The space is enlivened with brightly colored accent walls and bright blue exposed 'soft' ductwork overhead. The ceiling has 'clouds' cut out that drop down to create intimacy at the group reading kiva and circulation desk. The space was specifically designed with its young K-6 readers in mind from private reading nooks to activity tables. The interior renovations included a complete renovation and expansion to the administration areas and health services. A teacher's workroom, counselor's suite, and parent/volunteer support areas were added. The corridors were designed with colorful floor tile patterns that not only create interest but also improved way finding.

### PROJECT TEAM

Austin ISD

Doucet & Associates

MEP Engineering

JQ+Tsen

Combs Consulting Group

BLW Security Group

Hollon + Cannon

Coleman & Associates



**12,410 SF**  
SIZE



**AUSTIN, TX**  
LOCATION



**2017**  
COMPLETED



## ANGLETON CHRISTIAN SCHOOL

K-12 | EDUCATION

A Pre-K through 12th grade private school, this new facility features 2 wings of classrooms, learning spaces and a central commons area which serves as a cafeteria, gym and auditorium. Classrooms lined the perimeter of the building with accent walls and flooring transitions of red and grey hues. Exterior materials included a mix of brick and stone woven together to create depth and rhythm along the elevation. Creating a unified campus feel, the exterior design utilizes similar materials as the future planned campus. Future wings are planned for additional classrooms, gymnasium and chapel. Angleton Christian School is part of the First Baptist Church of Angleton.

### PROJECT TEAM

Lorraine Builders

Baker & Lawson

Dawson Van Orden

Hurst Technologies Corp

Whirlwind Steel Builders Inc.



**45,300 SF**  
SIZE



**ANGLETON, TX**  
LOCATION



**2018**  
COMPLETED



# WHAT WE DO.

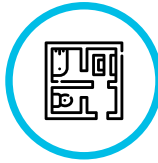
From dirt to finish out, we are a full-service architecture and interior design firm.

Our teams have worked on a wide range of project types from tilt-wall distribution centers and mixed use retail developments to breweries and distilleries. This diverse knowledge base allows us to incorporate aspects from other project types to create truly, unique designs.



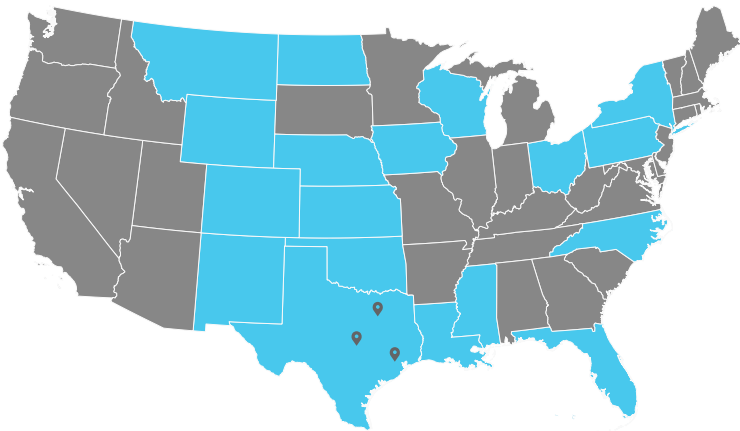
## GROUND-UP

- SITE & LAND PLANNING
- PROGRAMMATIC ANALYSIS
- CONCEPTUAL SITE LAYOUTS
- SCHEDULING & BUDGETING
- SCHEMATIC DESIGN
- DESIGN DEVELOPMENT
- CONSTRUCTION DOCUMENTS
- BIDDING & CONTRACT NEGOTIATION
- CONSTRUCTION ADMINISTRATION
- PROJECT MANAGEMENT
- HIGH PILE CONSULTING
- 3D/VR RENDERINGS
- LEED/GREEN STRATEGY CONSULTING



## INTERIORS

- PROGRAMMATIC ANALYSIS
- CONCEPTUAL DESIGN
- SCHEDULING & BUDGETING
- SPACE PLANNING
- DESIGN DEVELOPMENT
- PRICING DRAWINGS
- CONSTRUCTION DOCUMENTS
- INTERIOR DESIGN
- FURNITURE, FIXTURES, & EQUIPMENT (FF&E)
- CONSTRUCTION ADMINISTRATION



## WHERE WE WORK

- |                |              |
|----------------|--------------|
| Florida        | New Mexico   |
| Kansas         | New York     |
| Louisiana      | Oklahoma     |
| Mississippi    | Ohio         |
| Montana        | Texas        |
| North Carolina | Wisconsin    |
| Nebraska       | Wyoming      |
| North Dakota   | Pennsylvania |

\*Additionally reciprocal state licenses can typically be obtained in 4 weeks through our NCARB certification

## AWARDS + CERTIFICATIONS



- Choctaw Nation - Preferred Supplier
- Texas HUB MBE - Statewide | VID: 1812021007700
- TXDOT SBE - Statewide | VID: 20798245
- City of Austin MBE | VID: V00000955255
- City of Houston MBE | VID: 156996
- National Minority Supplier Development Council - Houston & DFW
- North Central Texas Regional Certification Agency (NCTRCA) MBE
- South Central Texas Regional Certification Agency (SCTRCA) MBE
- SCTRCA Native American Business Enterprise
- SCTRCA Small Business Enterprise



# WHO WE ARE.

Well, we're not like the other firms and we're proud of that.

Our firm is a place where success is not measured by award-winning projects, total square feet delivered or number of LEED certified projects. We think all of these are great but our number one success metric is client satisfaction.

FIRM LEADERSHIP



### RAYBURN "JAKE" DONALDSON, AIA MANAGING PARTNER

As the firm's Managing Partner and Houston market leader, Jake provides strategic, executive, and financial leadership while managing 3+ million square feet of ground-up projects per year, as well as the firm's tenant interiors division. Jake's expertise spans across a wide variety of project types including mixed-use retail, industrial, and breweries.. He takes a hands on approach and is dedicated to fast turnaround and quality customer service.

JDonaldson@methodarchitecture.com  
**HTX** 713.842.7500 ext. 103



### ERIC HUDSON, AIA PARTNER

Firm partner and Austin market leader, Eric is responsible for managing an extensive variety of projects ranging from boutique interior build-outs to large scale, ground-up construction within the corporate, industrial, retail, public, and education sectors. His passion for design and attention to detail combined with a dedication to customer service has built his recipe for successful projects.

EHudson@methodarchitecture.com  
**HTX** 713.842.7500 ext.104 | **ATX** 512.478.0970



### KEITH HOLLEY, AIA PARTNER

As a firm partner and the Dallas market leader, Keith is responsible for overseeing the work for some of the firm's largest clients and complex projects, including office and industrial parks, build-to-suits and brewery projects. Keith's approach & technical knowledge in an array of building code administration & construction techniques has proven invaluable toward the successful completion of hundreds of projects.

KHolley@methodarchitecture.com  
**HTX** 713.842.7500 ext.102 | **DTX** 469.640.6329



# IT'S NOT GOODBYE.

**This is the end of the brochure but it doesn't have to be the end for us. Stay in touch!**

.....

## CONNECT ON SOCIAL!



Method Architecture PLLC



Method Architecture



@MethodArchPLLC



@MethodArchitecture

## VISIT US

### AUSTIN

2921 E. 17th Street  
Unit B, Suite 200  
Austin, TX 78705  
512.478.0970

### DALLAS

1919 McKinney Ave, Suite 2011  
Dallas, TX 75201  
469.640.6329

### HOUSTON

2118 Lamar Street, Suite 200  
Houston, TX 77003  
713.842.7500

Or visit us at:

[methodarchitecture.com](http://methodarchitecture.com)



## INDUSTRIES WE SERVE

AVIATION

BREWERIES + DISTILLERIES

COLD STORAGE

CORPORATE INTERIORS

EDUCATION

HEALTHCARE

HOSPITALITY

INDUSTRIAL

MIXED USE

MULTI-FAMILY

OFFICE

PUBLIC

RETAIL

SPORTS + FITNESS

WORSHIP

