

HEALTHCARE PROJECTS



EGO-FREE DESIGN.

Method Architecture is a uniquely ego-free architecture firm, committed to a systematic creative process that focuses on clients and their needs first and foremost. Operating with the flexibility of a small firm, but with a big reach, Method is a full-service architecture firm specializing in tenant finish and ground-up projects encompassing industrial, retail, office, breweries, public and more.

OUR MISSION: To provide creative, high-quality, and innovative design solutions through an ego-free experience that focuses on our clients and their needs first and foremost.



EGO-FREE CULTURE

We collaborate with clients to understand their needs and goals which serve as our priorities throughout the entire project making the design process enjoyable.



RESPONSIVENESS

Proactive project management and constant communication to ensure project schedule and budget are met with quick turnaround.



INNOVATION

Through utilizing the latest technology and design trends, we are able to create efficiencies for our clients resulting in a unique design solution.



KNOWLEDGE

Our teams have worked on a wide range of project types from tilt-wall distribution centers to breweries. This diverse knowledge base allows us to incorporate aspects from other project types to create truly, unique designs.

CERTIFICATIONS

- Choctaw Nation - Preferred Supplier
- Native American Business Association - Member
- Texas Historically Underutilized Business
- Texas Department of Transportation - Small Business Enterprise
- City of Austin - Minority Business Enterprise
- City of Houston - Minority Business Enterprise
- Metro Houston - Minority Business Enterprise
- Metro Houston - Small Business Enterprise
- Southwest Minority Supplier Development Council
- Houston Minority Supplier Development Council
- Dallas Fort Worth Minority Supplier Development Council
- South Central Texas Regional Certification Agency
- North Central Texas Regional Certification Agency
- Hire Houston First - CB/LB

WHAT WE DO.



GROUND-UP



INTERIORS

From dirt to finish out, we are a full-service architecture and interior design firm.

Our teams have worked on a wide range of project types from tilt-wall distribution centers and mixed use retail developments to breweries and distilleries. This diverse knowledge base allows us to incorporate aspects from other project types to create truly, unique designs.

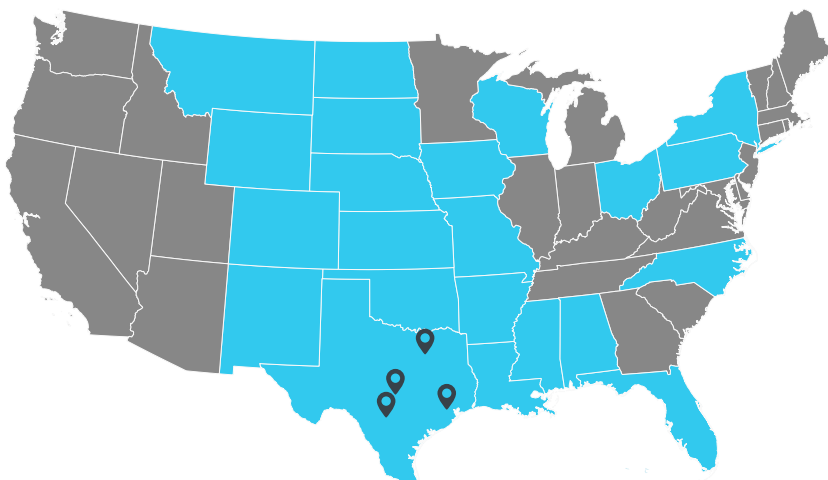
- SITE & LAND PLANNING
- PROGRAMMATIC ANALYSIS
- CONCEPTUAL SITE LAYOUTS
- SCHEDULING & BUDGETING
- SCHEMATIC DESIGN
- DESIGN DEVELOPMENT
- CONSTRUCTION DOCUMENTS
- BIDDING & CONTRACT NEGOTIATION
- CONSTRUCTION ADMINISTRATION
- PROJECT MANAGEMENT
- HIGH PILE CONSULTING
- 3D/VR RENDERINGS
- LEED/GREEN STRATEGY CONSULTING
- PROGRAMMATIC ANALYSIS
- CONCEPTUAL DESIGN
- SCHEDULING & BUDGETING
- SPACE PLANNING
- DESIGN DEVELOPMENT
- PRICING DRAWINGS
- CONSTRUCTION DOCUMENTS
- INTERIOR DESIGN
- FURNITURE, FIXTURES, & EQUIPMENT (FF&E)
- CONSTRUCTION ADMINISTRATION

EGO-FREE MYTHBUSTER



Architects only talk about themselves and their design philosophies.

Trust us, we'd rather hear about what's going on with you over a beer than talk about ourselves and design philosophy. So please, tell us more about you or let's skip to the pretty pictures.



WHERE WE WORK

- | | |
|-------------|----------------|
| Alabama | New Mexico |
| Arkansas | New York |
| Colorado | North Carolina |
| Florida | North Dakota |
| Iowa | Oklahoma |
| Kansas | Ohio |
| Louisiana | Pennsylvania |
| Mississippi | South Dakota |
| Missouri | Texas |
| Montana | Wisconsin |
| Nebraska | Wyoming |

* Additionally reciprocal state licenses can typically be obtained in 4 weeks through our NCARB certification

WHO WE ARE.

Well, we're not like the other firms and we're proud of that.

Our firm is a place where success is not measured by award-winning projects, total square feet delivered or number of LEED certified projects. We think all of these are great but our number one success metric is client satisfaction.

FIRM LEADERSHIP



RAYBURN "JAKE" DONALDSON, AIA
MANAGING PARTNER

Jake provides strategic, executive, and financial leadership guiding the firm's operations with a focus on practicing ego-free architecture and providing unparalleled customer service. Jake takes a hands-on approach and oversees every aspect of the firm's operations while mentoring employees for success. Jake is an active member in the community and has held board positions with NAIOP Houston, Texas Society of Architects, AIA Houston, and Houston Food Bank Fresh. JDonaldson@methodarchitecture.com | 713.842.7500 ext.103



ERIC HUDSON, AIA
PARTNER

Eric leads the firm's overall design direction and aesthetic as well as the company's approach to technology, innovation, and quality control. He promotes a collaborative, creative, and client-focused project approach working across all of Method's teams. Mentoring designers throughout our process, Eric provides key feedback on functionality, creative problem solving, constructability, and community impact. With over 15 years of experience across multiple sectors including office, retail, education, industrial, and public projects, Eric shares his cross-disciplined knowledge and keen eye for design.

EHudson@methodarchitecture.com | 713.842.7500 ext.104



KEITH HOLLEY, AIA
PARTNER

Keith is responsible for overseeing client relations and new project development for some of the firm's largest and most complex projects. He oversees the firm's business development efforts with a focus on strategic partnerships and collaboration with all stakeholders. Keith serves as a mentor to managers and supports the company's training and education programs. He also oversees MethodCares, the firm's philanthropic initiative providing pro bono design services and volunteer activity. Keith is the current President of the Association of Commercial Real Estate Professionals.

KHolley@methodarchitecture.com | 713.842.7500 ext.102



MEET#TEAMMETHOD

EGO-FREE MYTHBUSTER



Not all architects and designers wear horn-rimmed glasses

Nor do these make us better at our job.



METRIC MOB

MEDICAL OFFICE BUILDING

This project consists of a ground-up, 2 story, medical office building. Clean and modern finishes were used throughout the exterior and lobby spaces from sleek wood planks and black stone to a glass skirt surround. This was designed as a shell building with core build-outs, including entry and elevator lobby, an elevators, stairs and reserved for future tenant build-outs.

PROJECT TEAM

- Longbow Real Estate Group
- Burton Construction
- Kimley-Horn
- Dally Associates
- Wylie Consulting Engineers



23,040 SF
SIZE



AUSTIN, TX
LOCATION



2020
COMPLETED



GRAND PARKWAY PEDIATRIC DENTAL

DENTAL

Grand Parkway Pediatric Dental is a pediatric dental facility located in Richmond, Texas. The 5,500 square-foot office includes office space, a waiting area with game rooms attached, individual treatment rooms, an open-area dental space, and training room to provide continuing education to fellow dentists. The interior design is inspired by the owner, Dr. Faisal Khan, and his dream of an immersive, underwater themed environment. Each design decision was carefully thought out to match the theme; from the surfboards as dental chairs to the larger than life 3-D murals. Durable healthcare finishes that have a wide range of colors and blue tones were used throughout to be inviting to children while still keeping the environment sterile.

PROJECT TEAM

T&D Engineers
 J.A. Greene Construction
 Patterson Dental: Dental Supplies

Worlds of Wow
 Cambria



5,522 SF
 SIZE



RICHMOND, TX
 LOCATION



2019
 COMPLETED



LAKESIDE MRI

MEDICAL OFFICE BUILDING

This project consisted of natural elements of wood and stone mixed with a modern aesthetic. Pops of blue helped play off of the soothing colors while a large linear wood design varying at different lengths is featured in the lobby walls and ceiling. Patient rooms, x-ray rooms, MRI and CT scanning rooms, medical lab, waiting area, and offices are all included in the building.

PROJECT TEAM

Jacob White Construction
H2B Inc.
KCI Technologies
Civil Concepts, Inc.
Wong & Associates, Inc.



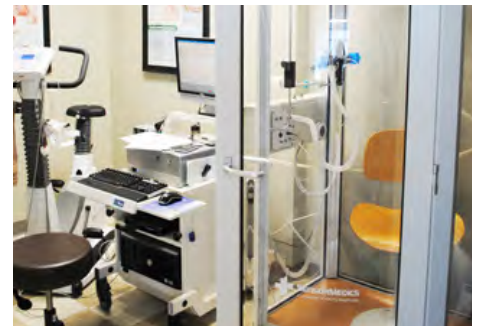
7,424 SF
SIZE



PASADENA, TX
LOCATION



2019
COMPLETED



HARBOR HEALTHCARE

MEDICAL OFFICE BUILDING

This ground up, two story, tilt-wall, medical office building in Beaumont, TX is comprised of Harbor's corporate offices, clinic, and medical exam rooms. The two-story lobby features a custom 3-form wall and a grand staircase with glass guardrails.

PROJECT TEAM

Harbor Healthcare System
Camden Construction



16,300 SF
SIZE



BEAUMONT, TX
LOCATION



2012
COMPLETED



LAHIRI PLASTIC SURGERY

SURGICAL CENTER

Lahiri Plastic Surgery is a surgical center and spa retreat located in Shenandoah, TX. The building design includes an abundance of natural light, multiple exam rooms, a state certified surgical center, and a spa complete with a full line of services. The design architect was Wilson Architectural Group and Method Architecture was Architect of Record.

PROJECT TEAM

Lahiri Plastic Surgery
Camden Construction



14,231 SF
SIZE



SHENANDOAH, TX
LOCATION



2009
COMPLETED



BRITTMORE DENTAL OFFICE

DENTAL

Brittmore Dental is a ground-up dental facility that will be located in Houston, Texas. We have been working closely with the client, DR. Philip Cimo, to bring out the vision he is wanting by giving several schematic design options with renderings to help confirm the correct direction to go with design. The design will feature metal cladding, horizontal wood lines, and black and grey brick to help bring out the clients request of a "mid century" style with clean lines.

PROJECT TEAM

Steward Development & Construction



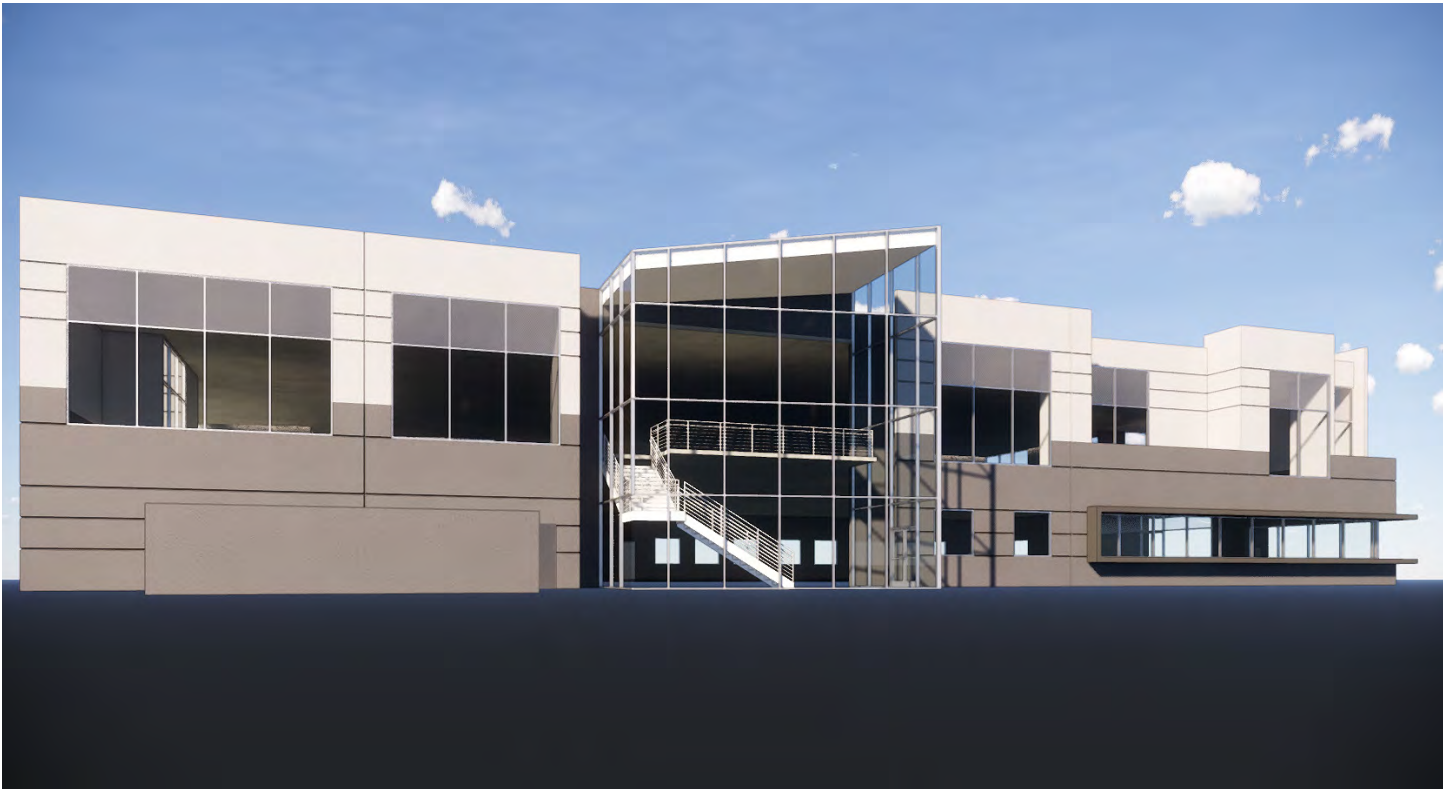
4,000 SF
SIZE



HOUSTON, TX
LOCATION



2021
COMPLETION



KINGWOOD MEDICAL OFFICE BUILDING

MEDICAL OFFICE BUILDING

This ground up, tilt wall, two-story medical office building is located in Kingwood, TX. This project is expected to be complete by end of 2019 with 42,000 square feet.

PROJECT TEAM

Kingwood Medical
Jacob White Construction



42,000 SF
SIZE



HOUSTON, TX
LOCATION



2019
COMPLETED



LEGACY AT CIMARRON

SENIOR CARE | ASSISTED LIVING FACILITY

This luxury, two-story, assisted living facility with memory care suite has 86 units consisting of 5 room types to accommodate the varying needs of residents. The building features a 2-story atrium with large clerestory windows with views of the Franklin mountains, ample covered patio space and amenities such as a salon and movie theatre.

PROJECT TEAM

Pinpoint Senior Living
Bradbury Stamm Construction



68,000 SF
SIZE



EL PASO, TX
LOCATION



2017
COMPLETED



LEGACY AT CRYSTAL FALLS

SENIOR CARE | ASSISTED LIVING FACILITY

This luxury, assisted living facility consists of 71 units, a full-service commercial kitchen and three interior courtyards. The building design capitalizes on a central corridor with an abundance of natural light and spaced for relaxing and interacting with the community. This mixed use facility features a movie theater, salon, fitness center and game room.

PROJECT TEAM

Pinpoint Senior Living
Cadence McShane



48,400 SF
SIZE



LEANDER, TX
LOCATION



2015
COMPLETED



LEGACY AT FALCON POINT

SENIOR CARE | ASSISTED LIVING FACILITY

This luxury two-story assisted facility consists of 84 units, a full service commercial kitchen and two interior courtyards. As a pioneer of assisted living the facility design, the building features four different unit designs, a movie theater, salon, fitness center, game rooms and sports bar.

PROJECT TEAM

Pinpoint Senior Living
Cadence McShane



65,000 SF
SIZE



KATY, TX
LOCATION



2014
COMPLETED



LEGACY AT HIGHWOODS PRESERVE

SENIOR CARE | ASSISTED LIVING FACILITY

This luxury, two-story, assisted facility consists of 84 units, a full service commercial kitchen, movie theater, sports bar, and two interior courtyards. The design team turned the preexisting site conditions of the woodlands and wetlands into an aesthetic opportunity; creating a nostalgic retreat for the residents.

PROJECT TEAM

Pinpoint Senior Living
WDG Contractors



65,000 SF
SIZE



TAMPA, FL
LOCATION



2016
COMPLETED



HARBOR HOSPICE

HOSPICE

The project features a spacious lobby with a two-story vaulted ceiling with the Harbor brands' signature lighthouse featured atop the building. This building was developed as a prototype to be used across the Texas/Louisiana region. Other locations are in Houston, Beaumont and Jasper.

PROJECT TEAM

Harbor Healthcare
Camden Construction



24,289 SF
SIZE



LAKE CHARLES, LA
LOCATION



2015
COMPLETED

IT'S NOT GOODBYE.

This is the end of the brochure but it doesn't have to be the end for us. Stay in touch!

VISIT US

HOUSTON

2118 Lamar Street Suite 200
Houston, TX 77003
713.842.7500

AUSTIN

2921 E. 17th Street Unit B, Suite 200
Austin, TX 78702
512.478.0970

DALLAS

3227 McKinney Ave. Suite 201
Dallas, TX 75204
214.790.7171

SAN ANTONIO

18911 Hardy Oak Blvd,
San Antonio, TX 78258
210.874.1569

methodarchitecture.com



EGO-FREE ARCHITECTURE

BREWERIES + DISTILLERIES

INDUSTRIAL

RETAIL

OFFICE

HOSPITALITY

SPORTS + FITNESS

PUBLIC

HEALTHCARE

EDUCATION



METHOD
architecture