



EGO-FREE ARCHITECTURE

PUBLIC

EGO-FREE DESIGN.

Method Architecture is a uniquely ego-free architecture firm, committed to a systematic creative process that focuses on clients and their needs first and foremost. Operating with the flexibility of a small firm, but with a big reach, Method is a full-service architecture firm specializing in tenant finish and ground-up projects encompassing industrial, retail, office, breweries, public and more.

OUR MISSION:

To provide creative, high-quality, and innovative design solutions through an ego-free experience that focuses on our clients and their needs first and foremost.



EGO-FREE CULTURE

We collaborate with clients to understand their needs and goals which serve as our priorities throughout the entire project making the design process enjoyable.



RESPONSIVENESS

Proactive project management and constant communication to ensure project schedule and budget are met with quick turnaround.



INNOVATION

Through utilizing the latest technology and design trends, we are able to create efficiencies for our clients resulting in a unique design solution.



KNOWLEDGE

Our teams have worked on a wide range of project types from tilt-wall distribution centers to breweries. This diverse knowledge base allows us to incorporate aspects from other project types to create truly, unique designs.

CERTIFICATIONS

- Choctaw Nation - Preferred Supplier
- Native American Business Association - Member
- Texas Historically Underutilized Business
- Texas Department of Transportation - Small Business Enterprise
- City of Austin - Minority Business Enterprise
- City of Houston - Minority Business Enterprise
- Metro Houston - Minority Business Enterprise
- Metro Houston - Small Business Enterprise
- Southwest Minority Supplier Development Council
- Houston Minority Supplier Development Council
- Dallas Fort Worth Minority Supplier Development Council
- South Central Texas Regional Certification Agency
- North Central Texas Regional Certification Agency
- Hire Houston First - CB/LB

WHO WE ARE.

Well, we're not like the other firms and we're proud of that.

Our firm is a place where success is not measured by award-winning projects, total square feet delivered or number of LEED certified projects. We think all of these are great but our number one success metric is client satisfaction.

FIRM LEADERSHIP



RAYBURN "JAKE" DONALDSON, AIA
MANAGING PARTNER

Jake provides strategic, executive, and financial leadership guiding the firm's operations with a focus on practicing ego-free architecture and providing unparalleled customer service. Jake takes a hands-on approach and oversees every aspect of the firm's operations while mentoring employees for success. Jake is an active member in the community and has held board positions with NAIOP Houston, Texas Society of Architects, AIA Houston, and Houston Food Bank Fresh. JDonaldson@methodarchitecture.com | 713.842.7500 ext.103



ERIC HUDSON, AIA
PARTNER

Eric leads the firm's overall design direction and aesthetic as well as the company's approach to technology, innovation, and quality control. He promotes a collaborative, creative, and client-focused project approach working across all of Method's teams. Mentoring designers throughout our process, Eric provides key feedback on functionality, creative problem solving, constructability, and community impact. With over 15 years of experience across multiple sectors including office, retail, education, industrial, and public projects, Eric shares his cross-disciplined knowledge and keen eye for design.

EHudson@methodarchitecture.com | 713.842.7500 ext.104



KEITH HOLLEY, AIA
PARTNER

Keith is responsible for overseeing client relations and new project development for some of the firm's largest and most complex projects. He oversees the firm's business development efforts with a focus on strategic partnerships and collaboration with all stakeholders. Keith serves as a mentor to managers and supports the company's training and education programs. He also oversees MethodCares, the firm's philanthropic initiative providing pro bono design services and volunteer activity. Keith is the current President of the Association of Commercial Real Estate Professionals.

KHolley@methodarchitecture.com | 713.842.7500 ext.102



MEET#TEAMMETHOD

EGO-FREE MYTHBUSTER



Not all architects and designers wear horn-rimmed glasses

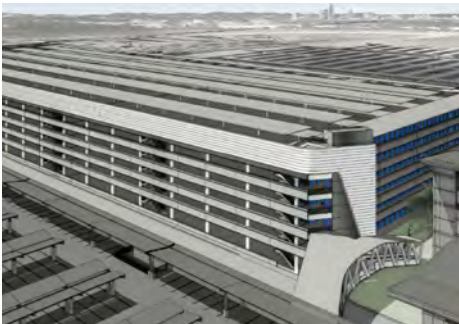
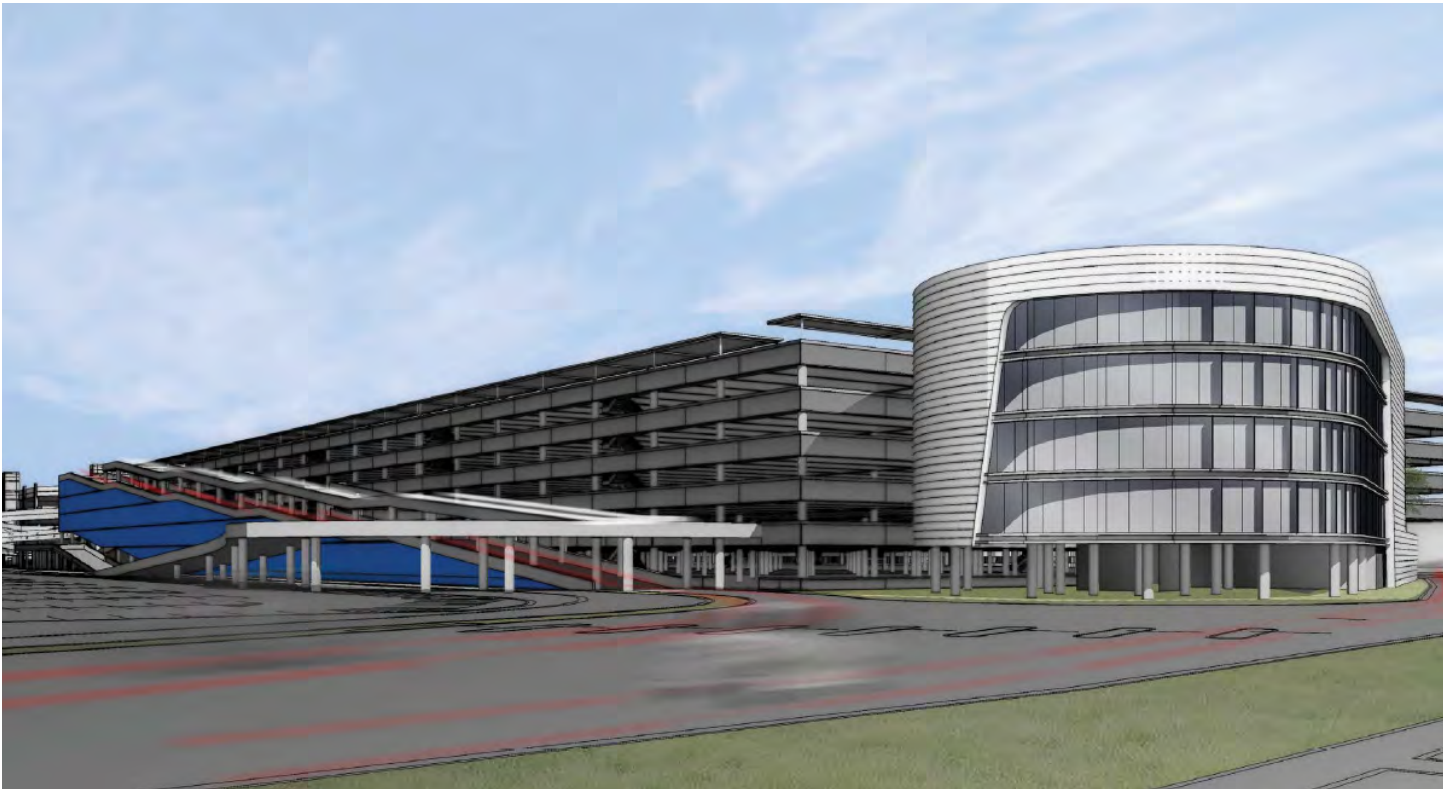
Nor do these make us better at our job.



CIVIC PROJECTS

CIVIC PROJECTS

PROJECT NAME	LOCATION
ABIA EAST TERMINAL	AUSTIN, TX
ABIA PARKING GARAGE & OFFICE FACILITY	AUSTIN, TX
ABIA TOLL CANOPY STUDY	AUSTIN, TX
ARANSAS WILDLIFE REFUGE VISITOR CENTER	AUSTWELL, TX
AFRICAN AMERICAN CULTURAL CENTER	AUSTIN, TX
AUSTIN COMMUNITY COLLEGE HIGHLAND CHILLER PLANT	AUSTIN, TX
AUSTIN CONVENTION CENTER FIRE EGRESS STUDY	AUSTIN, TX
AUSTIN CONVENTION CENTER SKY BRIDGE	AUSTIN, TX
AUSTIN CONVENTION CENTER WALLER CREEK TERRACE ROOM	AUSTIN, TX
AUSTIN CITY HALL & PLAZA PROGRAM	AUSTIN, TX
AUSTIN ENERGY SYSTEM CONTROL CENTER	AUSTIN, TX
BARTON SPRINGS BATHHOUSE IMPROVEMENTS	AUSTIN, TX
BEE CAVE CITY HALL	BEE CAVE, TX
BOWIE UNDERPASS FOR CITY OF AUSTIN	AUSTIN, TX
CENTRAL FIRE STATION	AUSTIN, TX
DECKER LAKE ENVIRONMENTAL LAB RELOCATION STUDY	AUSTIN, TX
DOUGHERTY ARTS CENTER RENOVATION	AUSTIN, TX
DOVE SPRINGS PUBLIC HEALTH FACILITY FEASIBILITY REPORT	AUSTIN, TX
EMERGENCY COMMUNICATION CENTER	AUSTIN, TX
EMS #33 CANOPY	AUSTIN, TX
FACILITY MASTERPLAN & FEASIBILITY STUDY	AUSTIN, TX
MCBETH RECREATION CENTER RENOVATIONS	AUSTIN, TX
PAMPA DPS OFFICE FOR TFC	AUSTIN, TX
PFLUGERVILLE JUSTICE CENTER	PFLUGERVILLE, TX
PFLUGERVILLE O&M FACILITY	PFLUGERVILLE, TX
PRECINCT ONE OFFICE BUILDING	AUSTIN, TX
PUBLIC WORKS O&M FACILITIES PFLUGERVILLE	AUSTIN, TX
PUBLIC WORKS O&M FACILITIES ROUND ROCK	ROUND ROCK, TX
ROSEWOOD POOL ADA IMPROVEMENTS	AUSTIN, TX
ROSEWOOD POOL BATHHOUSE	AUSTIN, TX
ROUND ROCK MASTERPLAN	ROUND ROCK, TX
SABINE STREET RENOVATION	AUSTIN, TX
SAN MARCOS SITE & NEEDS ASSESSMENT	SAN MARCOS, TX
SHERIFF & FIRE MARSHALL OFFICE	AUSTIN, TX
SPICEWOOD SPRINGS FIRESTATION #44	AUSTIN, TX
TEXAS CAPITOL ELEVATOR MODERNIZATION	AUSTIN, TX
TEXAS FACILITY COMMISSION RENOVATIONS	AUSTIN, TX
TFC STATE BUILDING ELEVATOR RENOVATIONS	AUSTIN, TX
TRAVIS COUNTY SNOWDEN PROPERTY FACILITY MASTER PLAN & FEASIBILITY STUDY	AUSTIN, TX
ZILKER PARK THEATRE RENOVATIONS	AUSTIN, TX
ZILKER PARK TRAILHEAD RESTROOMS	AUSTIN, TX



ABIA PARKING GARAGE & OFFICE FACILITY

CIVIC | INFRASTRUCTURE | AVIATION

As associate architect, Method Architecture is providing programming, interiors, and construction administration services. The Austin Bergstrom International Airport parking garage and administration office facility is five stories with a \$200 million budget and expected to be completed in 2019. The parking garage will have 5,800 parking spaces and have space by space detection systems that will allow customers to know if spaces are available on a level and to see lights above the space allowing them to know where a vacant parking spot is. The 80,000 SF administration facility will house seven departments and consolidate Department of Aviation activities in one facility. The project is on a tight site adjacent to the existing terminal and parking facilities and will require strict scheduling for staging, deliveries and construction sequencing.

PROJECT TEAM

City of Austin, Department of Aviation, PGAL



80,000 SF
SIZE



AUSTIN, TX
LOCATION



2019
COMPLETED



ARANSAS WILDLIFE REFUGE VISITOR CENTER

CIVIC | PARKS & RECREATION

This project is a total of 7 buildings that consist of a new administrative building, visitor center, associated maintenance, bunk house, and volunteer buildings. Modern, sleek finishes will be used throughout the design while natural elements of stone and wood will help play on the vast nature surround.

PROJECT TEAM

U.S. Department of the Interior
Butler Cohen
Hart Gaugler + Associates

Rennell
Henderson Engineers



30,000+ SF
SIZE



AUSTWELL, TX
LOCATION



2022
COMPLETED



AUSTIN CONVENTION CENTER SKY BRIDGE

CIVIC | INTERIOR FINISH

The City of Austin Convention Center needed a sky bridge to provide a pedestrian link from the original facility's south side third floor to the fourth floor exhibit halls in the expansion. The sky bridge is fitted into the original two-story north lobby which is enhanced by one of Austin's Art in Public Places installations. The sky bridge honors the original construction by continuing building on the facility's material palette of stainless steel and glass railings, carpet and granite while inserting a boldly angled walkway. Ample space was included on the sky bridge for meeting attendees to pass through the space as well as allow informal meetings to occur in the wider areas. A new stairway links the sky bridge to the existing escalator access to the fourth floor. In addition to the sky bridge, a new meeting room was created within the adjacent office space.

PROJECT TEAM

City of Austin, Department of Public Works, Encotech Consultants Inc., Jaster-Quint Anilla



N/A
SIZE



AUSTIN, TX
LOCATION



2011
COMPLETED



AUSTIN CONVENTION CENTER WALLER CREEK TERRACE ROOM

CIVIC | OFFICE

Converted an underutilized area within the Austin Convention Center into a highly visible, marketing & sales offices for convention center events. This interactive area for administrative offices, conferences, and sales meetings features suspended ceiling “clouds” creating intimate, acoustically private areas, while still keeping the expansive feel of the high ceiling space. New modular furniture and wall panel systems allowed a highly flexible, open, natural light-filled office environment. The careful use of angled walls and layered ceiling planes created variety and interest in keeping with its sales and marketing functions.

PROJECT TEAM

City of Austin



7,100 SF
SIZE



AUSTIN, TX
LOCATION



2010
COMPLETED



PFLUGERVILLE OPERATIONS & MAINTENANCE FACILITY

CIVIC

For the City of Pflugerville, the project consists of design and documents for a new 8,000 SF Operations & Maintenance facility for the City of Pflugerville, and a site master plan to accommodate new and future facilities on an existing wastewater treatment plant site. The O&M Facility is to house crews for various City departments including PARD, Streets & Drainage, and Utilities. Site Master plan is to accommodate the future new O&M Facility, planned expansions for the new Treatment Plant and Public Works Office Building, Relocated Materials Storage, future site drainage improvements, and various existing buildings for fleet maintenance and other uses that are to remain in continuous operation.

PROJECT TEAM

City of Pflugerville



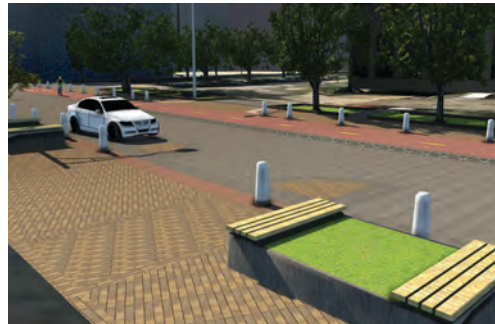
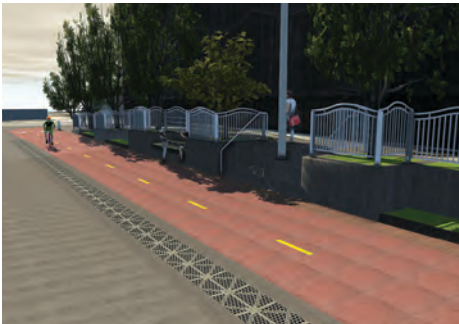
8,000 SF
SIZE



PFLUGERVILLE, TX
LOCATION



2018
COMPLETED



SABINE STREET PROMENADE

CIVIC

The City of Austin desired to provide the flexibility of using two blocks of Sabine Street near the Waller Creek Park Corridor as a festival promenade without disrupting normal local access for vehicular traffic the remaining days of the year. Method Architecture along with Coleman & Associates, the landscape architect consultant, coordinated with the city staff to provide a vision of the street as a pedestrian promenade, enhancing the pedestrian experience, as well as the connectivity between the Waller Creek Trail system, the Lance Armstrong Bikeway and the historic fabric of downtown. The project required coordination with the adjacent business and residential property owners, Waller Creek Conservancy, Capital Metro Downtown MetroRail and the adjacent Austin Energy Facility Scope included providing design and documents for streetscape improvements along with new pavings, plantings, guard rails and street furniture.

PROJECT TEAM

City of Austin

Coleman & Associates



AUSTIN, TX
LOCATION



2018
COMPLETED



ZILKER PARK THEATRE RENOVATIONS

CIVIC | PARKS AND RECREATION

This project consisted of renovations and expansion to the stage and dressing areas of the Zilker Hillside Theatre, an iconic outdoor venue that has served the performing arts for generations of Austinites. Project includes expanded backstage/loading, "Towers" additions housing toilet/showers and other support functions, and a canopy to protect the backstage and wings from inclement weather. Extreme care is exercised in the design and management of this project in order to satisfy all of the stakeholder concerns in the highly sensitive Zilker Park/Barton Springs location. The services were provided pro-bono as Method is a longtime supporter of the arts and the Zilker Theatre program in Austin.

PROJECT TEAM

Zilker Hillside Theatre
City of Austin



AUSTIN, TX
LOCATION



2014
COMPLETED



ZILKER PARK TRAILHEAD RESTROOMS

CIVIC | PARKS AND RECREATION

This project consisted of providing materials for the construction of a restroom facility adjacent to the Zilker Hillside Theater, site work to create a storm water runoff vegetative treatment for improved water quality, curb, gutter and asphalt demolition, new curb and gutter installation, sidewalk installation, and lastly an installation of a boulder garden. The trailhead restroom facility is designed as a collection of metaphors paying homage to its iconic setting in Zilker Park near Barton Springs. The walls consist of massive rough faced native limestone slabs, as if pulled from the nearby hillside and tilted upright. The vertical spaces, or “fissures” between the slabs are covered with translucent blue panels, as water might seep between the layers. The translucent panels would give a luminescent quality from either side, while providing visual privacy to the users. Above the limestone are layers of wire mesh to screen out birds, designed with imagery of the rolling hill country landscape in mind. Shade and shelter from the rain is provided by a simple tilted slab of concrete textured with impressions of leaves of native oak, pecan, and big tooth maple as if it were a tree canopy. This canopy is held up by concrete trunks and pre-oxidized steel branches. The entire assembly is intended to be a simple statement of respect for the natural beauty of the hill country in which it sits.

PROJECT TEAM

City of Austin



AUSTIN, TX
LOCATION



2021
COMPLETED



AUSTIN ENERGY SYSTEM CONTROL CENTER



LEED SILVER CERTIFICATION
SUSTAINABILITY

CIVIC | INTERIOR FINISH

As the local architectural consultant, this System Control Center is the hub for transmission, monitoring and maintenance of the Austin Energy electrical grid. The renovation complied with LEED Silver Certification, replaced all MEP systems, provided redundant roof systems, provided a new elevator, finish out of office and training space and provided a 3,500 SF control room with a 15' tall x 80' video wall. The renovation was budgeted at \$67,000,000 including video display systems, data center, redundant power services, training, AV services and emergency generator facilities.

PROJECT TEAM

City of Austin, Austin Energy, Elerbe Beckett



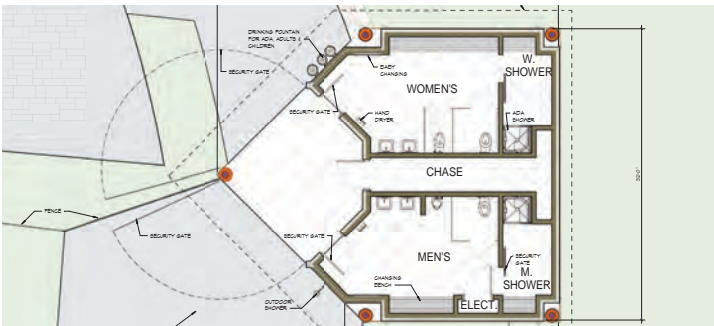
120,000
SIZE



AUSTIN, TX
LOCATION



2012
COMPLETED



ROSEWOOD PARK IMPROVEMENTS & RENOVATIONS

CIVIC | PARKS & RECREATION

Project which began as a study to determine the scope of work required to provide a new bathhouse at the existing Rosewood Pool. The study looked at the available buildings and site development issues including water quality control and Subchapter E design standards for pedestrian access. As part of the study, a schematic design for the proposed bathhouse was developed to address access and site location concerns. At the conclusion of the study the City asked Method to continue into design of the new bathhouse.

PROJECT TEAM

City of Austin
 Hollon-Cannon Group, LLC
 Encotech Engineering Consultants, Inc.

Steinman Luevano Structures, LLP
 Coleman & Associates
 Doucet + Chan Partners, LLC

AUSTIN, TX
 LOCATION

2020
 COMPLETED



CITY OF ROUND ROCK GENERAL SERVICES FACILITY & MASTERPLAN

CIVIC

The aim on this master plan was to not only design an expanded Luther Peterson campus that could properly house these maintenance and operations spaces, but also provide adequate space for administrative functions. The master plan design accommodates the long term (20 year) requirements for Vehicle Maintenance Facility, Public Works Facility, Bunker Storage & Material Storage Yard, Fuel and Wash Facility, and Parking. Multiple options were evaluated based on work flow, vehicular flow, phasing, environmental impacts, site boundary difficulties, cost and overall flexibility. The master plan layout provides a multitude of benefits such as allowing for full separation of visitor maintenance activities from public works operations activities. The design master plan allows for growth of the major building, storage and parking elements past even the program's long-term requirements.

PROJECT TEAM
City of Round Rock



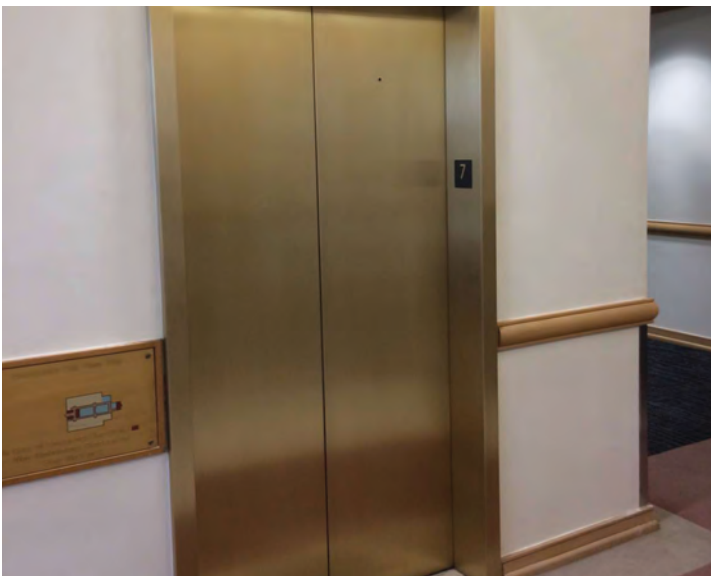
N/A
SIZE



ROUND ROCK, TX
LOCATION



2015
COMPLETED



TEXAS STATE PARKING GARAGE ELEVATOR REPAIRS & REPLACEMENTS

CIVIC

This project consisted of repairing and/or replacing elevators in nine state parking garages in Austin. The project scope included nine traction and nine hydraulic elevators. This project was divided into two phases. The first phase was the Assessment Phase, consisting of the assessment of building and system conditions and user and maintenance staff needs. The second phase was the implementation phase consisting of design and document production, cost / schedule compliance, and construction.

PROJECT TEAM

City of Austin
Lerch Bates
TG&W
WJE Associates



N/A
SIZE



AUSTIN, TX
LOCATION



2016
COMPLETED



SPICEWOOD SPRINGS FIRE STATION #44

CIVIC

This project consisted of, 9,000 SF fire and EMS station with an apparatus room to accommodate two fire trucks and one EMS ambulance. Living areas include sleeping, dining, kitchen, study, dispatch, fitness and locker facilities. Site design includes separate staff and visitor parking areas, water quality pond, and a fueling station with two 5,000 gallon fuel tanks. Systems include dispatch, paging and vehicle exhaust capturing.

PROJECT TEAM

City of Austin
City of Austin Police, Fire & EMS



9,000 SF
SIZE



AUSTIN, TX
LOCATION



2006
COMPLETED



EMERGENCY COMMUNICATIONS CENTER

OFFICE | DISPATCH | DATA

The consolidated emergency response facility for the Texas Department of Transportation, City of Austin Police, Fire and EMS Departments, Travis County Sheriff Department and Capital Metro also houses the City of Austin's Emergency Operations Center as well as a \$16M computer-aided dispatch/radio/traffic management technology. The project was awarded LEED Silver rating for sustainability. Architecture + Plus (now Method Architecture) was associate architect to DMJM for furniture, programming and construction administration.

PROJECT TEAM

City of Austin
Texas Department of Transportation
City of Austin Police, Fire & EMS

Travis County Sheriff Department
Capital Metro



73,000 SF
SIZE



AUSTIN, TX
LOCATION



2004
COMPLETED



EDUCATION PROJECTS

K-12 EDUCATION PROJECTS

PROJECT NAME	SCHOOL DISTRICT
AISD THEATER IMPROVEMENTS PROJECT MANAGEMENT SERVICES	AUSTIN ISD
AKINS HIGH SCHOOL RENOVATION & EXPANSION	AUSTIN ISD
AUSTIN HIGH SCHOOL LOCKER ROOM	AUSTIN ISD
BLANTON ELEMENTARY SCHOOL RENOVATION	AUSTIN ISD
BOWIE HIGH SCHOOL ASSESSMENT	AUSTIN ISD
BOWIE HIGH SCHOOL BAND STORAGE	AUSTIN ISD
BOWIE HIGH SCHOOL BOND PROJECTS	AUSTIN ISD
BOWIE HIGH SCHOOL ROOF CANOPY	AUSTIN ISD
BRENTWOOD ELEMENTARY SCHOOL WINDOW REPLACEMENTS	AUSTIN ISD
CAMPBELL ALTERNATIVE LEARNING CENTER	AUSTIN ISD
EASTSIDE MEMORIAL EARLY COLLEGE HIGH SCHOOL MEP RENOVATIONS	AUSTIN ISD
GARZA HIGH SCHOOL ALTERNATIVE LEARNING CENTER RELOCATION	AUSTIN ISD
GILES SERVICE CENTER ADDITION & RENOVATION	AUSTIN ISD
GRAHAM ELEMENTARY SCHOOL RENOVATION & ADDITIONS	AUSTIN ISD
JAIME D. PADRON ELEMENTARY SCHOOL	AUSTIN ISD
JOHNSTON ELEMENTARY SCHOOL RENOVATIONS	AUSTIN ISD
KEALING MIDDLE SCHOOL FOOD LAB & RENOVATION	AUSTIN ISD
LBJ LIBERAL ARTS & SCIENCE ACADEMY	AUSTIN ISD
NEW OVERTON ELEMENTARY SCHOOL	AUSTIN ISD
NORMAN ELEMENTARY SCHOOL RENOVATIONS	AUSTIN ISD
ORTEGA ELEMENTARY SCHOOL RENOVATIONS	AUSTIN ISD
PALM ELEMENTARY SCHOOL RENOVATIONS	AUSTIN ISD
REAGAN HIGH SCHOOL RENOVATIONS	AUSTIN ISD
REILLY ELEMENTARY SCHOOL WINDOW REPLACEMENTS	AUSTIN ISD
RIDGEVIEW ALTERNATIVE LEARNING CENTER	AUSTIN ISD
SAEGERT BUS DEPOT RENOVATION	AUSTIN ISD
STEPHEN F. AUSTIN HIGH SCHOOL ELEVATOR MODERNIZATION	AUSTIN ISD
SUMMIT ELEMENTARY SCHOOL IDIQ	AUSTIN ISD
TEXAS SCHOOL FOR THE BLIND AND VISUALLY IMPAIRED	AUSTIN ISD
WEBB MIDDLE SCHOOL RENOVATIONS	AUSTIN ISD
WINN ELEMENTARY SCHOOL LIBRARY ADDITION & RENOVATIONS	AUSTIN ISD
YELLOW JACKET STADIUM IDIQ	AUSTIN ISD
BLOCKHOUSE CREEK ELEMENTARY SCHOOL MEDIA CENTER	LEANDER ISD
MENDEZ ELEMENTARY SCHOOL HVAC	SAN MARCOS ISD
NEW DEL VALLE MIDDLE SCHOOL	DEL VALLE ISD
ROBERTSON ELEMENTARY SCHOOL GYM ADDITION & RENOVATION	ROUND ROCK ISD
ROUND ROCK HIGH SCHOOL RENOVATIONS	ROUND ROCK ISD
WESTWOOD HIGH SCHOOL RENOVATIONS	ROUND ROCK ISD
WELLS BRANCH SCHOOL NURSE STATION & KITCHEN RENOVATION	ROUND ROCK ISD
ANGLETON CHRISTIAN SCHOOL	PRIVATE SCHOOL
HUMMINGBIRD MONTESSORI SCHOOL	PRIVATE SCHOOL



AKINS HIGH SCHOOL

PUBLIC | K-12

For AISD Akins High School, Method doubled the size of the current weight room, patched the existing gym floor, and made improvements to the existing Athletic Fields by providing grading/fill for improved drainage, re-vegetation as necessary, providing state of the art irrigation to all Athletic Fields, and resurfacing tennis courts.

PROJECT TEAM

Austin Independent School District
Structures
Doucet + Chan
Hollon + Cannon Group
EEA Consulting Engineers



2,998 SF
SIZE



AUSTIN, TX
LOCATION



2019
COMPLETED



JAIME D. PADRON ELEMENTARY SCHOOL



LEED GOLD CERTIFICATION
SUSTAINABILITY

PUBLIC | ELEMENTARY SCHOOL

This adaptive reuse renovation converted an existing warehouse into a 57 classroom school. It is currently Austin’s largest elementary school and has achieved the City of Austin 4-Star Green Building rating and LEED Gold Certification. In order to accommodate the need for more space, a second floor was added including an atrium with a sky-lit mall to bring daylight in the interior to enhance the learning environment. Classrooms, gym and cafeteria combination, library, specialized classrooms, and administration functions were rooms created in the interior. Bold primary colors were used throughout the design to create a playful atmosphere for the elementary. The exterior was completely revamped from the original warehouse look to create a lively, welcoming appearance including a playground, covered outdoor play area with a basketball court, canopies for wayfinding at the entrances, and parent and bus drop-off stations.



143,000 SF
SIZE



AUSTIN, TX
LOCATION



2014
COMPLETED

PROJECT TEAM

Austin ISD, Flintco LLC, Coleman & Associates, MPE Engineering Inc., Doucet & Associates, JQ Engineers, Combs Consulting Group, BLW Security Group, Hollon + Cannon



BOWIE HIGH SCHOOL



CITY OF AUSTIN 3-STAR
GREEN BUILDING RATING
SUSTAINABILITY

PUBLIC

This expansion was completed in 2 phases to reduce disruption in a fully occupied facility. Phase 1 consisted of a 4,608 SF renovations of existing areas into upgraded Science Lab/Classrooms and Computer Classrooms. Phase 2 included a 12,244 SF, two-story addition consisting of 4 chemistry lab/classrooms, a computer lab, restrooms, and chemical storage/workrooms. The chemistry classrooms were outfitted with lab casework, fume hoods, eyewash and emergency system shut-offs. Particular attention was paid to natural lighting, with sunshades, light shelves, and clerestories filling some spaces with light from 3 directions. The exterior brick banding took cues from the existing building, but were subtly re-patterned to give the classroom addition its own unique character. Shading devices accent the south and west elevations with bright splashes of red. The Bowie High School renovations achieved a 3-star Austin Energy Green Building rating.

PROJECT TEAM

Austin ISD, DMAC Construction



16,852 SF
SIZE



AUSTIN, TX
LOCATION



2010
COMPLETED



WINN ELEMENTARY SCHOOL

PUBLIC

This project consisted of a 5,130 SF stand-alone library addition and 7,280 SF interior renovation of the elementary. The library addition is a steel frame on a suspended concrete slab and features an expansive reading room flooded with natural light. The space is enlivened with brightly colored accent walls and bright blue exposed 'soft' ductwork overhead. The ceiling has 'clouds' cut out that drop down to create intimacy at the group reading kiva and circulation desk. The space was specifically designed with its young K-6 readers in mind from private reading nooks to activity tables. The interior renovations included a complete renovation and expansion to the administration areas and health services. A teacher's workroom, counselor's suite, and parent/volunteer support areas were added. The corridors were designed with colorful floor tile patterns that not only create interest but also improved way finding.

PROJECT TEAM

Austin ISD, DMAC Construction



12,410 SF
SIZE



AUSTIN, TX
LOCATION



2017
COMPLETED



AISD GILES SERVICE CENTER

PUBLIC | K-12

This project consists of a 2,600 SF single story addition to an existing pre-engineered metal building at the Service Center owned by Austin ISD. The project also includes 3,800 SF of renovations to the existing buildings. The new spaces will allow expansion room for the Maintenance Department as well as house the incoming Transportation Department.

PROJECT TEAM

Doucet + Chan
Hollon + Cannon Group
DBR Inc.
Structures



6,400 SF
SIZE



AUSTIN, TX
LOCATION



2020
COMPLETED

IT'S NOT GOODBYE.

This is the end of the brochure but it doesn't have to be the end for us. Stay in touch!

VISIT US

HOUSTON

2118 Lamar Street Suite 200
Houston, TX 77003
713.842.7500

AUSTIN

2921 E. 17th Street Unit B, Suite 200
Austin, TX 78702
512.478.0970

DALLAS

3227 McKinney Ave. Suite 201
Dallas, TX 75204
214.790.7171

SAN ANTONIO

18911 Hardy Oak Blvd,
San Antonio, TX 78258
210.874.1569

methodarchitecture.com



EGO-FREE ARCHITECTURE

BREWERIES + DISTILLERIES

INDUSTRIAL

RETAIL

OFFICE

HOSPITALITY

SPORTS + FITNESS

PUBLIC

HEALTHCARE

EDUCATION



METHOD
architecture