

WORKPLACE INTERIORS



EGO-FREE ARCHITECTURE



WORKPLACE INTERIORS

methodarchitecture.com



EGO-FREE WORKPLACE INTERIORS

Today's workplace is becoming less defined creating a need for spaces that are flexible to the needs of modern companies and their employees.

We work with clients to understand their fundamental needs as an organization and then develop creative solutions to provide a workplace that cultivates engagement, promotes company brand and culture, and fosters connections between employees.

EGO-FREE MYTHBUSTER



Not all architects and designers wear horn-rimmed glasses

Nor do these make us better at our job.



CORPORATE CAMPUS



COWORKING



CREATIVE OFFICE



MAKER SPACES



FLEX SPACE



TRAINING CENTERS



TRADITIONAL OFFICE



CONTIGUOUS OFFICE



EXECUTIVE SUITES

WORKPLACE INTERIORS

| PROJECT NAME | SIZE (SQ FT) | LOCATION |
|---|--------------|---------------|
| AUSTIN CONVENTION CENTER OFFICES | 7,100 SF | AUSTIN, TX |
| BIG BROTHERS BIG SISTERS HEADQUARTERS | 19,900 SF | HOUSTON, TX |
| DIAMOND OFFSHORE OCEAN TECHNOLOGY CENTER | 29,845 SF | HOUSTON, TX |
| FINIAL GROUP OFFICE | 4,326 SF | HOUSTON, TX |
| GYRODATA HEADQUARTERS | 224,425 SF | CYPRESS, TX |
| HIGHER EDUCATION CORPORATE OFFICE | 5,094 SF | HOUSTON, TX |
| INTEX FLOORING OFFICE | 20,250 SF | HOUSTON, TX |
| JONES & CARTER CORPORATE HEADQUARTERS | 43,300 SF | HOUSTON, TX |
| JONES & CARTER - SATELLITE OFFICES | VARIES | MULTIPLE |
| LJA ENGINEERING | 10,213 SF | AUSTIN, TX |
| MAERSK TRAINING CENTER | 44,732 SF | HOUSTON, TX |
| NDT GLOBAL | 58,920 SF | HOUSTON, TX |
| NOVEL OFFICE COWORKING | VARIES | MULTIPLE |
| OMNI FLOW COMPUTERS OFFICE | 36,558 SF | SUGARLAND, TX |
| SUNNY SKY PRODUCTS CORPORATE OFFICE & LAB | 188,752 SF | HOUSTON, TX |
| TREADSTONE ENERGY SERVICES OFFICE | 12,126 SF | HOUSTON, TX |
| WEISER INSURANCE OFFICE | 4,856 SF | HOUSTON, TX |

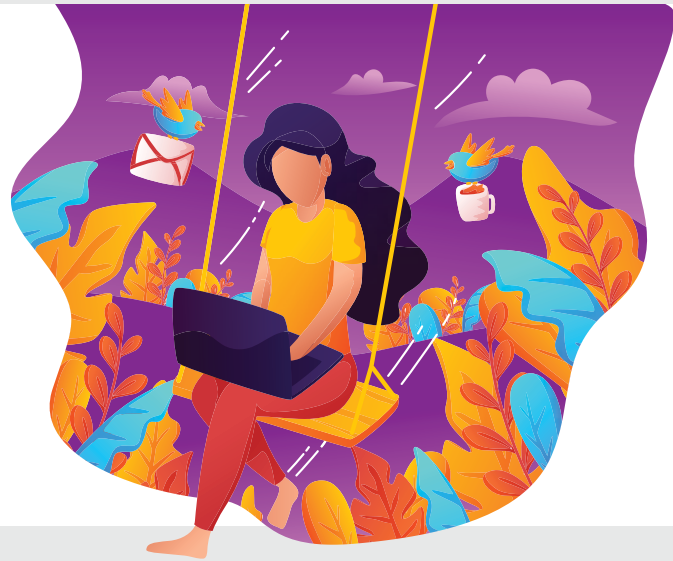
FLEXIBILITY

We understand that no two organizations operate the same way. We also understand that not every team or employee works the same way either. From open office layouts and hot-desking to collaboration hubs and traditional offices, we collaborate with clients to understand their employees' needs and programmatic requirements to create the optimal workplace to achieve company goals.



WELLNESS

Employee wellness goes beyond providing a fitness center or meditation room. While these are great amenities to consider for your office, wellness pertains to more than just mental or physical health. Our team is accredited with the International WELL Building Institute™ to develop workplace environments that are healthy, inclusive, inspiring and sustainable.



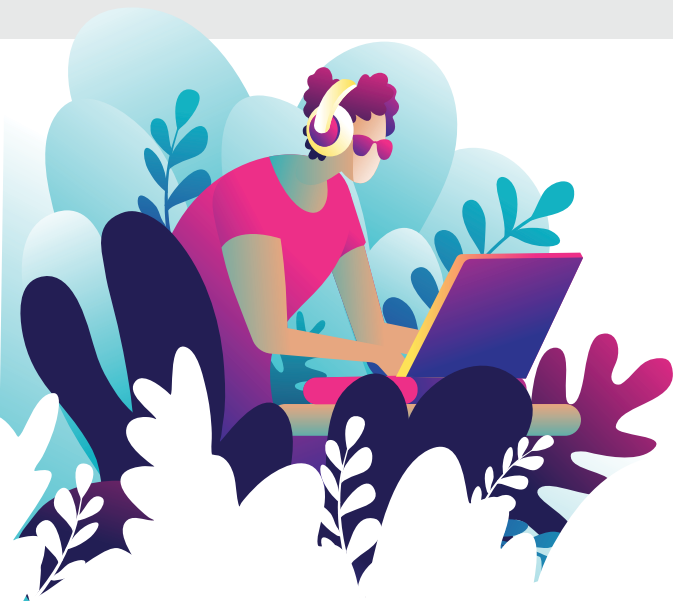
CONNECTIVITY


Today's workforce is increasingly mobile. With coworking and hot-desking becoming more common, workplaces must act as a hub of connectivity. Whether it's a meeting place for your employees, clients, prospects or consultants, the office should give people a place to connect seamlessly with each other, with technology and with the surrounding community.



BRAND + CULTURE

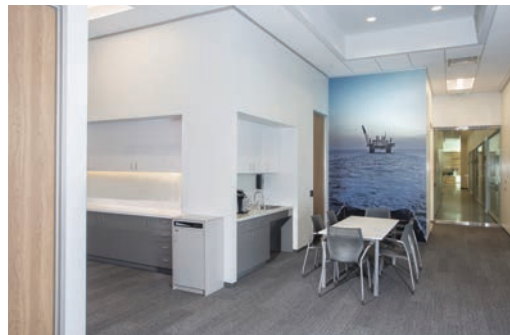
Your office environment is arguably your biggest brand asset. Attracting talent is harder than ever and younger generations place more importance on this than previous generations. By utilizing the built environment as a catalyst for engaging employees, we can help you create opportunities to bolster your company's mission, vision, and values.





**training
to improv
safety and
operation:
performa**

**a better
learning
experience**



MAERSK TRAINING CENTER



HBJ LANDMARK AWARD FINALIST
AWARD-WINNING

CORPORATE INTERIORS | TRAINING CENTER

The Maersk Training facility houses multiple classroom areas and seven immersive virtual reality simulators to train clients in meticulous detail on offshore drilling and exploration. This project utilizes natural materials, ultra-modern lines, and open workspaces to draw a connection between Maersk's home office in Denmark and the first US location. Additional features include open gathering and lounge spaces, welcoming entries, and shower facilities for users. Each classroom had a specific function and simulated specific experiences the trainees encounter on the job. Technologies used to enhance the atmosphere included raised flooring, high-tech virtual equipment, lighting and lighting controls, HVAC and HVAC control systems, special fire suppression systems, and sound walls. Ample natural light and sight lines to the exterior accompanied by ergonomic chairs, sit/stand desks and collaborative working areas were utilized to create ideal work areas for Maersk employees.

PROJECT TEAM

Maersk Training
Burton Construction



44,732 SF
SIZE



HOUSTON, TX
LOCATION



2015
COMPLETED



SCAN THE QR
CODE FOR A
VIRTUAL TOUR
OF OUR OFFICE!



METHOD ARCHITECTURE
HOUSTON, TX



METHOD ARCHITECTURE - HOUSTON OFFICE

CREATIVE OFFICE

Method Architecture's Houston office is located on the east side of downtown Houston in the East Village development. The office boasts a bright and modern design with fun accents and nods to its former life as an industrial warehouse. Features include a spacious kitchen and lounge, 4 meeting rooms, 3 phone rooms, a gym and virtual reality lab.

PROJECT TEAM

Corvus Construction



9,721 SF
SIZE



HOUSTON, TX
LOCATION



2016
COMPLETED



LOOP CENTRAL LOBBY RENOVATION
HOUSTON, TX



LOOP CENTRAL LOBBY

CORPORATE INTERIORS | LOBBY RENOVATION

Loop Central Building Three consisted of a lobby renovation. There are a total of four elevators in the building and 10 floors. The work included new flooring and ceilings, lighting, elevator cabs, furniture, and renovated restrooms. A lighter color palette and a more modern design helped refresh the space. Spanish rose granite walls and brushed stainless steel elevator doors were chosen as finishes to highlight the elevator lobby while marble floors and a light feature warmed up the space.

PROJECT TEAM

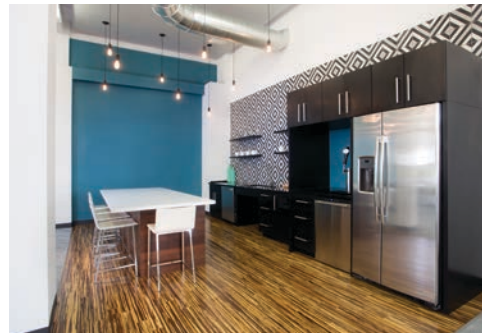
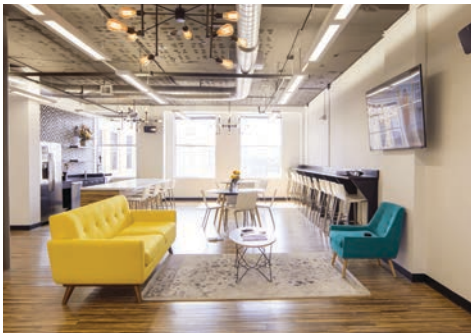
Griffin Partners



HOUSTON, TX
LOCATION



2013
COMPLETED



NOVEL COWORKING

COWORKING | CREATIVE OFFICE

Method has worked with Novel Coworking to transform old office spaces into new, modern coworking facilities. The spaces feature expansive interior glazing, high-tech LED lighting and card reader security. The design successfully balances the use of modern elements against classic features of the existing buildings including exposed ceilings, wrought iron building columns and the original flooring.

PROJECT TEAM

Novel Coworking
Burton Construction



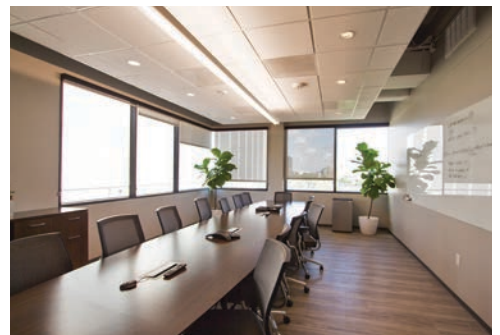
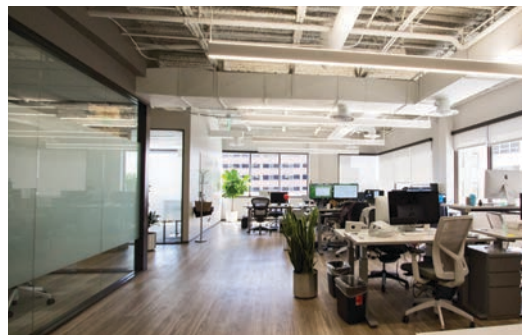
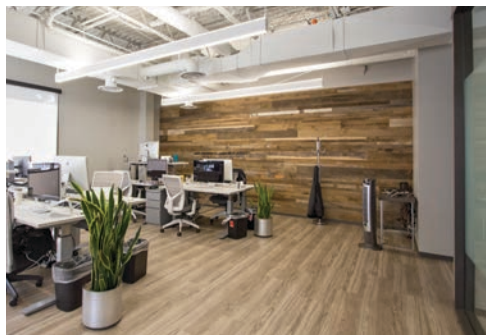
VARIES
SIZE



MULTIPLE
LOCATION



2016-PRESENT
COMPLETED



HIGHER EDUCATION CORPORATE OFFICE

CORPORATE INTERIORS

HigherEducation.com is a college recruitment services company helping potential college students find their ideal institutions. The vision for their office was to create a youthful, open concept office to mirror their clientele and to provide multiple styles of working.

Amenities throughout this creative workspace include open collaboration areas, reading nooks, exterior balconies, a large break room & meeting space, natural light throughout all spaces, and a bean bag meeting area for informal meetings.

PROJECT TEAM

O'Donnell Snider Construction



5,094 SF
SIZE



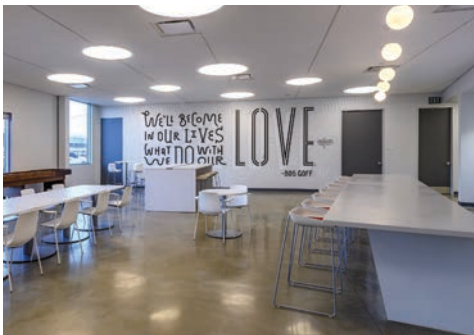
HOUSTON, TX
LOCATION



2018
COMPLETED



BIG BROTHERS BIG SISTERS HEADQUARTERS
HOUSTON, TX



BIG BROTHERS BIG SISTERS



2018 HBJ LANDMARK
AWARD FINALIST
AWARD-WINNING

CORPORATE BUILD-TO-SUIT | NON-PROFIT

Big Brothers Big Sisters Houston HQ is located just north of downtown. With a program combining private and open office space with interview and meeting rooms, a children's playroom, café, and a multi-purpose event space, the building uses standard building systems and cost effective materials to produce an inspiring work environment that is more than just an office. A three-story open atrium at the west entrance acts as a thickened public zone, within a main staircase and balcony system connect the three floors physically and visually to enhance interaction and communication.



19,898 SF
SIZE



2017
COMPLETED

PROJECT TEAM

Big Brothers Big Sisters
Agency-Agency
DMAC Construction
Stantec

TBG Partners
FMW Fab Lab
Signpro Display & Graphics
Steelcase

ROSI Office Systems
Rice Design Alliance
Rice University Arch. Program





GYRODATA INC. GLOBAL HQ

CORPORATE INTERIORS | WAREHOUSE

Gyrodata Inc. Global Headquarters consisted of a three-building office, industrial warehouse and parking garage complex constructed in Cypress, Texas. The facility was programmed to fit the needs of eight different departments with varying needs including open work areas as well as private office spaces. The office design was centered around a single common meeting space on each level in the central atrium to promote employee interaction and cross department socialization. Ample natural light and a cantilevered executive conference room over the main lobby provided a dynamic and engaging entry point.

PROJECT TEAM

Gyrodata
 EE Reed Construction
 Bihner Chen Engineering
 Bury + Partners

Dawson Van Orden Engineering
 Kendall Heaton
 Rennell & Associates, LLC



CYPRESS, TX
 LOCATION



2013
 COMPLETED



224,425 SF
 SIZE



LEED GOLD CERTIFICATION
 SUSTAINABILITY



2013 TILT-UP ACHIEVEMENT AWARD
 AWARD-WINNING





INTEX FLOORING

INDUSTRIAL INTERIORS

Intex Flooring, completed in 2018, is a 4,665 SF office build out from an existing 20,250 SF shell building. Minimalist designs utilizing a neutral color pallet, concrete, and natural wood textures flow throughout the office space. An open ceiling concept brought in an industrial feel while wooden "clouds" hanging from the ceiling helped warm up the atmosphere. .

PROJECT TEAM

Intex Flooring



20,250 SF
SIZE



HOUSTON, TX
LOCATION

EGO-FREE DESIGN.

Method Architecture is a uniquely ego-free architecture firm, committed to a systematic creative process that focuses on clients and their needs first and foremost. Operating with the flexibility of a small firm, but with a big reach, Method is a full-service architecture firm specializing in tenant finish and ground-up projects encompassing industrial, retail, office, breweries, public and more.

OUR

MISSION:

To provide creative, high-quality, and innovative design solutions through an ego-free experience that focuses on our clients and their needs first and foremost.



EGO-FREE CULTURE

We collaborate with clients to understand their needs and goals which serve as our priorities throughout the entire project making the design process enjoyable.



RESPONSIVENESS

Proactive project management and constant communication to ensure project schedule and budget are met with quick turnaround.



INNOVATION

Through utilizing the latest technology and design trends, we are able to create efficiencies for our clients resulting in a unique design solution.



KNOWLEDGE

Our teams have worked on a wide range of project types from tilt-wall distribution centers to breweries. This diverse knowledge base allows us to incorporate solutions from other project types to create truly, unique designs.



MEET #TEAMMETHOD



WHO WE ARE.

Well, we're not like the other firms and we're proud of that.

Our firm is a place where success is not measured by award-winning projects, total square feet delivered or number of LEED certified projects. We think all of these are great but our number one success metric is client satisfaction.

FIRM LEADERSHIP



RAYBURN "JAKE" DONALDSON, AIA
MANAGING PARTNER

Jake provides strategic, executive, and financial leadership guiding the firm's operations with a focus on practicing ego-free architecture and providing unparalleled customer service. Jake takes a hands-on approach and oversees every aspect of the firm's operations while mentoring employees for success. Jake is an active member in the community and has held board positions with NAIOP Houston, Texas Society of Architects, AIA Houston, and Houston Food Bank Fresh. JDonaldson@methodarchitecture.com | 713.842.7500 ext.103



ERIC HUDSON, AIA
PARTNER

Eric leads the firm's overall design direction and aesthetic as well as the company's approach to technology, innovation, and quality control. He promotes a collaborative, creative, and client-focused project approach working across all of Method's teams. Mentoring designers throughout our process, Eric provides key feedback on functionality, creative problem solving, constructability, and community impact. With over 15 years of experience across multiple sectors including office, retail, education, industrial, and public projects, Eric shares his cross-disciplined knowledge and keen eye for design.

EHudson@methodarchitecture.com | 713.842.7500 ext.104



KEITH HOLLEY, AIA
PARTNER

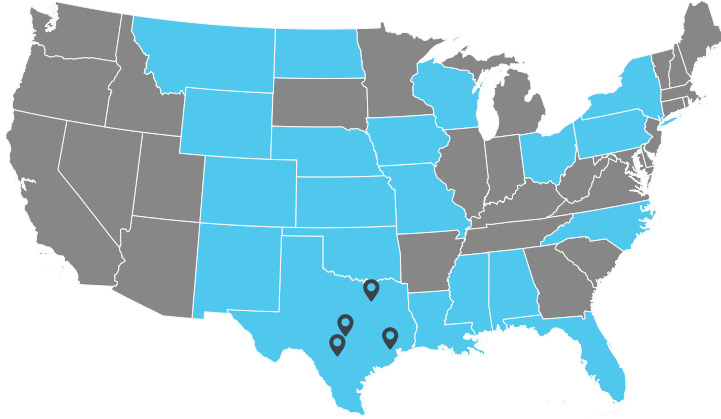
Keith is responsible for overseeing client relations and new project development for some of the firm's largest and most complex projects. He oversees the firm's business development efforts with a focus on strategic partnerships and collaboration with all stakeholders. Keith serves as a mentor to managers and supports the company's training and education programs. He also oversees MethodCares, the firm's philanthropic initiative providing pro bono design services and volunteer activity. Keith is the current President of the Association of Commercial Real Estate Professionals.

KHolley@methodarchitecture.com | 713.842.7500 ext.102

WHERE WE WORK

| | | | |
|----------|-------------|----------------|--------------|
| Alabama | Louisiana | New Mexico | Oklahoma |
| Colorado | Mississippi | New York | Pennsylvania |
| Florida | Missouri | North Carolina | Texas |
| Iowa | Montana | North Dakota | Wisconsin |
| Kansas | Nebraska | Ohio | Wyoming |

*Additionally reciprocal state licenses can typically be obtained in 4 weeks through our NCARB certification



OFFICE LOCATIONS

AUSTIN

2921 E. 17th Street, Unit B, Suite 200
Austin, TX 78702
512.478.0970

HOUSTON

2118 Lamar Street, Suite 200
Houston, TX 77003
713.842.7500

DALLAS

3224 McKinney Ave., Suite 201
Dallas, TX 75204
214.790.7171

SAN ANTONIO

18911 Hardy Oak Blvd.
San Antonio, TX 78258
210.874.1569

EGO-FREE MYTHBUSTER



Architects only wear black turtlenecks.

No turtlenecks here. Also, it is far too hot in Texas to wear a turtleneck. That is all we have to say on this topic.

WORKPLACE INTERIORS



METHOD
architecture



EGO-FREE ARCHITECTURE

Method Architecture is a full-service architecture firm specializing in tenant finish & ground-up projects encompassing industrial, retail, office, breweries, public and more.

www.methodarchitecture.com

EGO-FREE
INNOVATIVE
RESPONSIVE
CLIENT-FIRST